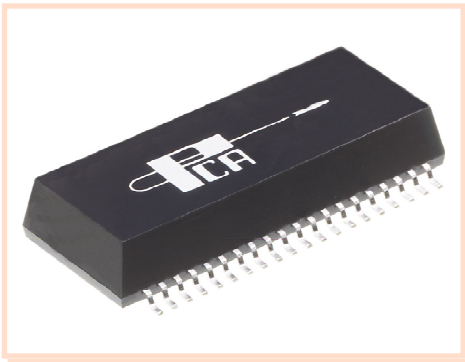


Multiport Module for Switched Hub Transceivers

EPE6307S

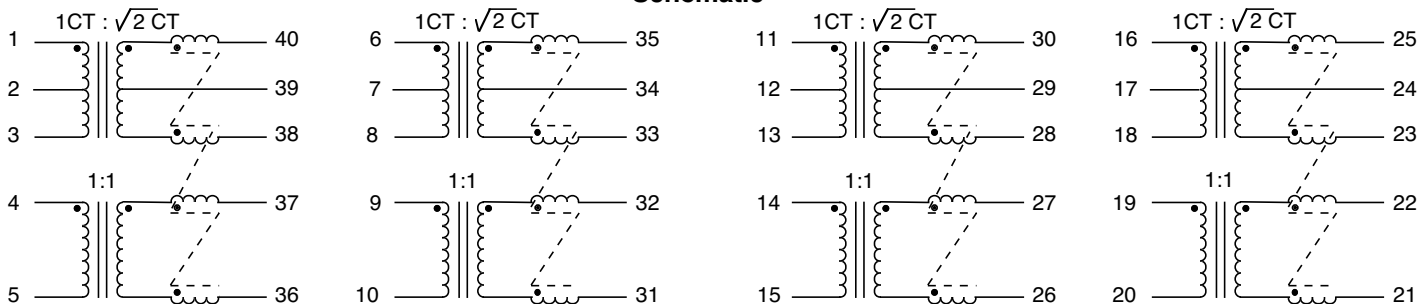


- Recommended for Level One LXT 915 •
- Robust design allows for toughest soldering processes •
- Complies with or exceeds IEEE 802.3, 10 Base-T Requirements •

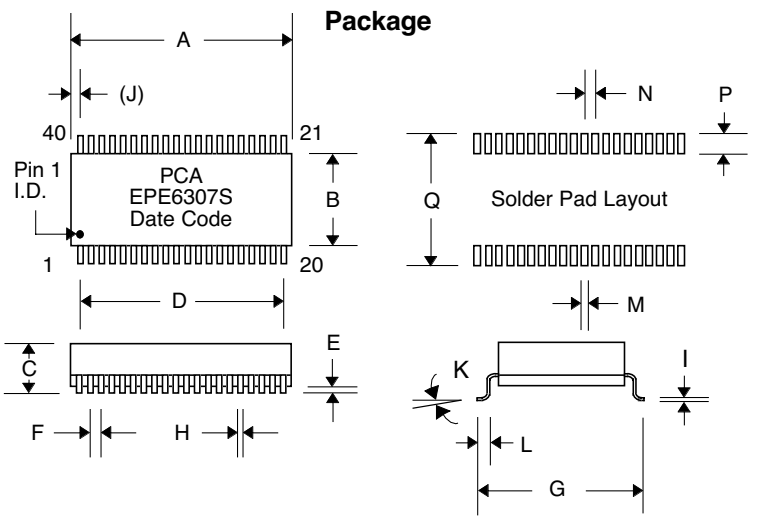
Electrical Parameters @ 25° C

Inductance (μ H Min.)	Interwinding Capacitance (pF Max.)	Leakage Inductance (μ H Max.)	CMRR (dB Min.)								Return Loss (dB Min.)	Hipot (Vrms)	Crosstalk (dB Min.)
			10 MHz		50 MHz		100 MHz		200 MHz				
@ 100 KHz, 0.1 Vrms	@ 100 KHz, 0.1 Vrms	@ 100 KHz, 0.1 Vrms	Xmit	Rcv	Xmit	Rcv	Xmit	Rcv	Xmit	Rcv			
150	12	.4	-50	-20	-40	-20	-35	-20	-25	-10	-15	1500	-35

Schematic



Package



Dimensions

Dim.	(Inches)			(Millimeters)		
	Min.	Max.	Nom.	Min.	Max.	Nom.
A	1.110	1.13	1.12	28.19	28.70	28.45
B	.470	.490	.480	11.94	12.45	12.19
C	.250	.270	.260	6.35	6.86	6.60
D	---	---	.950	---	---	24.13
E	.010	.015	.0125	.254	.381	.318
F	---	---	.050	---	---	1.27
G	.590	.610	.600	14.99	15.49	15.24
H	.016	.022	.019	.406	.559	.483
I	.008	.012	.010	.203	.305	.254
(J)	.075	.095	.085	1.91	2.41	2.16
K	0°	8°	---	0°	8°	---
L	.025	.045	.035	.635	1.14	.889
M	---	---	.030	---	---	.762
N	---	---	.050	---	---	1.27
P	---	---	.090	---	---	2.29
Q	---	---	.670	---	---	17.02